

## FITTINGS

# BMF/BFF/BMM Series - Three pieces unions



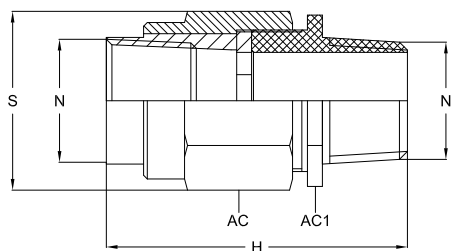
Three pieces unions for gas group IIB enable an independent rotation and the connection between pipes of an electrical equipment and enclosures or different devices of an explosion-proof equipment.

- BFF series (female/female)
- BMF series (male/female)
- BMM series (male/male)

## TECHNICAL FEATURES

<b>Material</b>	Galvanised steel (other materials upon request)
<b>IP rating</b>	IP66/IP67
<b>Ambient temperature range</b>	ATEX Galvanised steel: -20°C to +60°C with EPDM gasket Stainless Steel: -55°C to +60°C with SI/50 gasket (upon request)
	IEC Ex Galvanised steel: -20°C to +60°C with SILICON gasket (upon request) Stainless Steel: -50°C to +60°C with SILICON gasket (upon request)
	Special version suitable for high temperature +150°C is available upon request (the suffix become RBMF...)
<b>Approvals</b>	CESI 99 ATEX 034U IECEX CES 10.0002U EAC
<b>Marking</b>	II 2GD Ex d IIB Gb Ex tb IIIC Db IP66/67
	Special version suitable for IIC group of gases is available upon request
<b>Thread</b>	NPT, UNI-6125 (other thread upon request)

## Dimensions BMF



### BMF - Male/Female three pieces unions

TYPE	CODE	SIZE	THREAD	DIMENSIONS [mm]				WEIGHT [Kg]
				H	S	AC	AC1	
BMF-1	C040124130201	1/2"	UNI-6125	58	35	30	27	0,150
BMF-2	C040124230201	3/4"	UNI-6125	58	40	35	32	0,185
BMF-3	C040124330201	1"	UNI-6125	70	48	42	40	0,300
BMF-4	C040124430201	1" 1/4	UNI-6125	87	60	55	59	0,760
BMF-5	C040124530202	1" 1/2	UNI-6125	87	75	70	67	1,000
BMF-6	C040124630202	2"	UNI-6125	87	90	84	77	1,400
BMF-7	C040124730201	2" 1/2	UNI-6125	98	117	108	99	2,350
BMF-8	C040124830201	3"	UNI-6125	98	132	121	108	2,800
BMF-1N	C040124120201	1/2"	NPT	58	35	30	27	0,150
BMF-2N	C040124220201	3/4"	NPT	58	40	35	32	0,185
BMF-3N	C040124320201	1"	NPT	70	48	42	40	0,300
BMF-4N	C040124420201	1" 1/4	NPT	87	60	55	59	0,760
BMF-5N	C040124520201	1" 1/2	NPT	87	75	70	67	1,000
BMF-6N	C040124620201	2"	NPT	87	90	84	77	1,400
BMF-7N	C040124720201	2" 1/2	NPT	98	117	108	99	2,350
BMF-8N	C040124820201	3"	NPT	98	132	121	108	2,800

## FITTINGS

# BMF/BFF/BMM Series - Three pieces unions



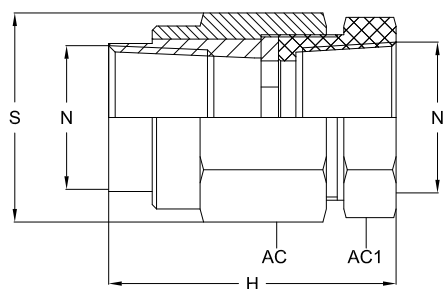
Three pieces unions for gas group IIB enable an independent rotation and the connection between pipes of an electrical equipment and enclosures or different devices of an explosion-proof equipment.

- BFF series (female/female)
- BMF series (male/female)
- BMM series (male/male)

## TECHNICAL FEATURES

<b>Material</b>	Galvanised steel (other materials upon request)
<b>IP rating</b>	IP66/IP67
<b>Ambient temperature range</b>	ATEX Galvanised steel: -20°C to +60°C with EPDM gasket Stainless Steel: -55°C to +60°C with SI/50 gasket (upon request)  IEC Ex Galvanised steel: -20°C to +60°C with SILICON gasket (upon request) Stainless Steel: -50°C to +60°C with SILICON gasket (upon request)  Special version suitable for high temperature +150°C is available upon request (the suffix become RBFF...)
<b>Approvals</b>	CESI 99 ATEX 034U IECEX CES 10.0002U EAC
<b>Marking</b>	II 2GD Ex d IIB Gb Ex tb IIIC Db IP66/67
<b>Thread</b>	Special version suitable for IIC group of gases is available upon request NPT, UNI-6125 (other thread upon request)

## Dimensions BFF



### BFF - Female/Female three pieces unions

TYPE	CODE	SIZE	THREAD	DIMENSIONS [mm]				WEIGHT [Kg]
				H	S	AC	AC1	
BFF-1	C040134130201	1/2"	UNI-6125	46	35	30	27	0,125
BFF-2	C040134230201	3/4"	UNI-6125	46	40	35	32	0,150
BFF-3	C040134330201	1"	UNI-6125	56	48	42	40	0,235
BFF-4	UPON REQUEST	1" 1/4	UNI-6125	63	60	55	59	0,640
BFF-5	C040134530201	1" 1/2	UNI-6125	66	75	70	67	0,960
BFF-6	C040134630201	2"	UNI-6125	66	90	84	77	1,220
BFF-7	UPON REQUEST	2" 1/2	UNI-6125	71	117	108	99	2,240
BFF-8	UPON REQUEST	3"	UNI-6125	71	132	121	108	2,600
BFF-1N	C040134120201	1/2"	NPT	46	35	30	27	0,125
BFF-2N	C040134220201	3/4"	NPT	46	40	35	32	0,150
BFF-3N	C040134320201	1"	NPT	56	48	42	40	0,235
BFF-4N	UPON REQUEST	1" 1/4	NPT	63	60	55	59	0,640
BFF-5N	C040134520201	1" 1/2	NPT	66	75	70	67	0,960
BFF-6N	C040134620201	2"	NPT	66	90	84	77	1,220
BFF-7N	UPON REQUEST	2" 1/2	NPT	71	117	108	99	2,240
BFF-8N	UPON REQUEST	3"	NPT	71	132	121	108	2,600

## FITTINGS

# BMF/BFF/BMM Series - Three pieces unions



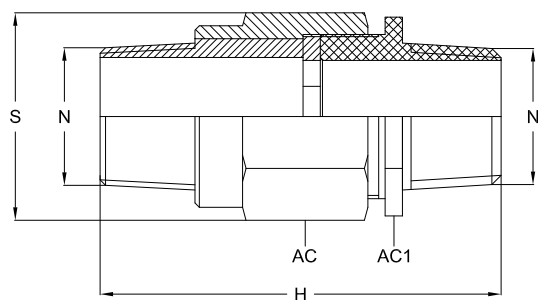
Three pieces unions for gas group IIB enable an independent rotation and the connection between pipes of an electrical equipment and enclosures or different devices of an explosion-proof equipment.

- BFF series (female/female)
- BMF series (male/female)
- BMM series (male/male)

## TECHNICAL FEATURES

<b>Material</b>	Galvanised steel (other materials upon request)
<b>IP rating</b>	IP66/IP67
<b>Ambient temperature range</b>	<p>ATEX</p> <p>Galvanised steel: -20°C to +60°C with EPDM gasket</p> <p>Stainless Steel: -55°C to +60°C with SI/50 gasket (upon request)</p> <p>IEC Ex</p> <p>Galvanised steel: -20°C to +60°C with SILICON gasket (upon request)</p> <p>Stainless Steel: -50°C to +60°C with SILICON gasket (upon request)</p> <p>Special version suitable for high temperature +150°C is available upon request (the suffix become RBMM...)</p>
<b>Approvals</b>	<p>CESI 99 ATEX 034U</p> <p>IECEX CES 10.0002U</p> <p>EAC</p>
<b>Marking</b>	<p>II 2GD</p> <p>Ex d IIB Gb</p> <p>Ex tb IIIC Db IP66/67</p>
<b>Thread</b>	<p>Special version suitable for IIC group of gases is available upon request</p> <p>NPT, UNI-6125 (other thread upon request)</p>

## Dimensions BMM



### BMM - Male/Male three pieces unions

TYPE	CODE	SIZE	THREAD	DIMENSIONS [mm]				WEIGHT [Kg]
				H	S	AC	AC1	
BMM-1	C040114130201	1/2"	UNI-6125	86	35	30	27	0,175
BMM-2	C040114230201	3/4"	UNI-6125	86	40	35	32	0,230
BMM-3	C040114330201	1"	UNI-6125	99	48	42	40	0,350
BMM-4	UPON REQUEST	1" 1/4	UNI-6125	115	60	55	59	0,910
BMM-5	C040114530201	1" 1/2	UNI-6125	115	75	70	67	1,220
BMM-6	C040114630201	2"	UNI-6125	115	90	84	77	1,620
BMM-7	C040114730201	2" 1/2	UNI-6125	126	117	108	99	2,900
BMM-8	UPON REQUEST	3"	UNI-6125	126	132	121	108	3,350
BMM-1N	C040114120201	1/2"	NPT	86	35	30	27	0,175
BMM-2N	C040114220201	3/4"	NPT	86	40	35	32	0,230
BMM-3N	C040114320203	1"	NPT	99	48	42	40	0,350
BMM-4N	UPON REQUEST	1" 1/4	NPT	115	60	55	59	0,910
BMM-5N	C040114520201	1" 1/2	NPT	115	75	70	67	1,220
BMM-6N	C040114620201	2"	NPT	115	90	84	77	1,620
BMM-7N	C040114720201	2" 1/2	NPT	126	117	108	99	2,900
BMM-8N	UPON REQUEST	3"	NPT	126	132	121	108	3,350

# FITTINGS

## EYS Series - Sealing fittings

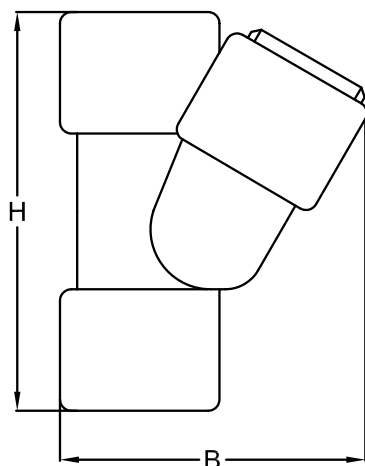


Sealing fittings prevent the passage of gas, vapors or flames through pipes system. EYS series vertical fittings are available in two different dimensions: the first up to 1"; the second up to 3" with an additional lateral opening for easy insertion of glass-fiber. EZS series are used for both vertical and horizontal mounting. The fittings must be installed as close as possible to the Ex d junction box and must be filled using CRV 420 approved resin. The sealing compound is supplied, in the quantity indicated in the table below, along with the sealing fitting. Other sealing compounds are not allowed.

## TECHNICAL FEATURES

<b>Material</b>	Aluminium with low content of copper
<b>IP rating</b>	IP66
<b>Ambient temperature range</b>	-20°C to +100°C
<b>Approvals</b>	IECEX CES 14.0019X CESI 03 ATEX 085 EAC
<b>Marking</b>	II 2GD Ex db IIC Gb Ex tb IIIC Db IP66
<b>Thread</b>	NPT, UNI-6125 (other threads upon request)
<b>Optional accessories</b>	CRV420 sealinig compound, fiber.

## Dimensions EYS



## Vertical sealing fittings EYS

TYPE	CODE	SIZE	THREAD	DIMENSIONS [mm]		RESIN QUANTITY	WEIGHT [Kg]
				H	B		
EYS-1	C040701130201	1/2"	UNI-6125	77	56	35 GR.	0,175
EYS-2	C040701230201	3/4"	UNI-6125	87	66	50 GR.	0,230
EYS-3	C040701330201	1"	UNI-6125	105	82	100 GR.	0,350
EYS-4	UPON REQUEST	1" 1/4	UNI-6125	145	84	240 GR.	0,910
EYS-5	C040701530201	1" 1/2	UNI-6125	145	84	240 GR.	1,220
EYS-6	C040701630201	2"	UNI-6125	150	95	380 GR.	1,620
EYS-7	C040701730201	2" 1/2	UNI-6125	200	134	1250 GR.	2,900
EYS-8	C040701830201	3"	UNI-6125	200	134	1250 GR.	3,350
EYS-1N	C040701120201	1/2"	NPT	77	56	35 GR.	0,175
EYS-2N	C040701220201	3/4"	NPT	87	66	50 GR.	0,230
EYS-3N	C040701320201	1"	NPT	105	82	100 GR.	0,350
EYS-4N	UPON REQUEST	1" 1/4	NPT	145	84	240 GR.	0,910
EYS-5N	C040701520201	1" 1/2	NPT	145	84	240 GR.	1,220
EYS-6N	C040701620201	2"	NPT	150	95	380 GR.	1,620
EYS-7N	C040701720201	2" 1/2	NPT	200	134	1250 GR.	2,900
EYS-8N	C040701820201	3"	NPT	200	134	1250 GR.	3,350

## Sealing fittings accessories

TYPE	CODE	WEIGHT
CRV 420/300 SEALING COMPOUND 300 GR.	UPON REQUEST	300 GR.
CRV 420/400 SEALING COMPOUND 400 GR.	C040800A00201	400 GR.
CRV 420/1000 SEALING COMPOUND 1000 GR.	B090100S00156	1000 GR.
FAB 25 FIBER 25 GR.	C040900A00201	250 GR.
FAB 50 FIBER 50 GR.	C040900A00202	500 GR.

# FITTINGS

## EZS Series - Sealing fittings

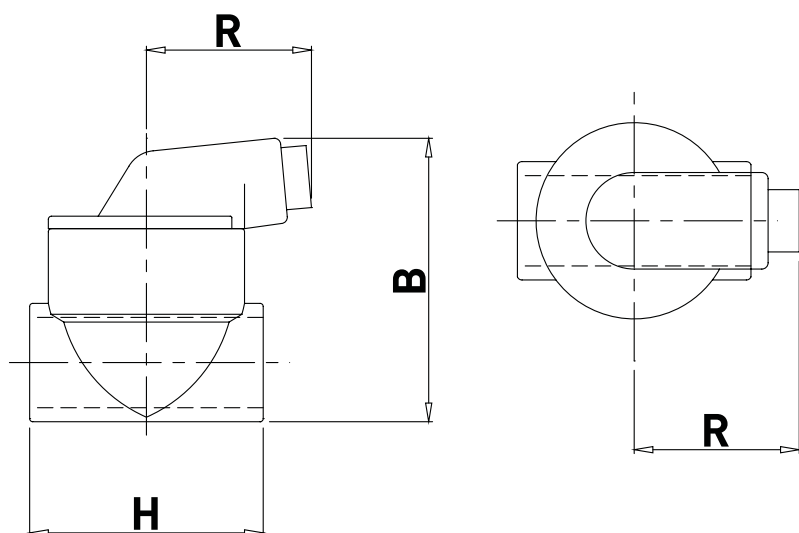


Sealing fittings prevent the passage of gas, vapors or flames through pipes system. EYS series vertical fittings are available in two different dimensions: the first up to 1"; the second up to 3" with an additional lateral opening for easy insertion of glass-fiber. EZS series are used for both vertical and horizontal mounting. The fittings must be installed as close as possible to the Ex d junction box and must be filled using CRV 420 approved resin. The sealing compound is supplied, in the quantity indicated in the table below, along with the sealing fitting. Other sealing compounds are not allowed.

### TECHNICAL FEATURES

Material	Aluminium with low content of copper
IP rating	IP66
Ambient temperature range	-20°C to +100°C
Approvals	IECEX CES 14.0019X CESI 03 ATEX 085 EAC
Marking	II 2GD Ex db IIC Gb Ex tb IIIC Db IP66
Thread	NPT, UNI-6125 (other threads upon request)
Optional accessories	CRV420 sealinig compound, fiber.

## Dimensions EZS



## Horizontal sealing fittings EZS

TYPE	CODE	SIZE	THREAD	DIMENSIONS [mm]			RESIN QUANTITY	WEIGHT [Kg]
				H	B	R		
EZS-1	C040601130201	1/2"	UNI-6125	72	83	50	140 GR.	0.26
EZS-2	C040601230201	3/4"	UNI-6125	72	83	50	140 GR.	0.25
EZS-3	C040601330201	1"	UNI-6125	74	92	50	140 GR.	0.27
EZS-4	UPON REQUEST	1" 1/4	UNI-6125	98	110	60	390 GR.	0.52
EZS-5	C040601530201	1" 1/2	UNI-6125	98	110	60	390 GR.	0.48
EZS-6	C040601630201	2"	UNI-6125	130	120	60	570 GR.	0.70
EZS-7	C040601730201	2" 1/2	UNI-6125	142	160	90	1000 GR.	1.50
EZS-8	C040601830201	3"	UNI-6125	142	160	90	1000 GR.	1.74
EZS-1N	C040601120201	1/2"	NPT	72	83	50	140 GR.	0.26
EZS-2N	C040601220201	3/4"	NPT	72	83	50	140 GR.	0.25
EZS-3N	C040601320201	1"	NPT	74	92	50	140 GR.	0.27
EZS-4N	UPON REQUEST	1" 1/4	NPT	98	110	60	390 GR.	0.52
EZS-5N	C040601520201	1" 1/2	NPT	98	110	60	390 GR.	0.48
EZS-6N	C040601620201	2"	NPT	130	120	60	570 GR.	0.70
EZS-7N	C040601720201	2" 1/2	NPT	142	160	90	1000 GR.	1.50
EZS-8N	UPON REQUEST	3"	NPT	142	160	90	1000 GR.	1.74

## Sealing fittings accessories

TYPE	CODE	WEIGHT
CRV 420/300 SEALING COMPOUND 300 GR.	UPON REQUEST	300 GR.
CRV 420/400 SEALING COMPOUND 400 GR.	C040800A00201	400 GR.
CRV 420/1000 SEALING COMPOUND 1000 GR.	B090100S00156	1000 GR.
FAB 25 FIBER 25 GR.	C040900A00201	250 GR.
FAB 50 FIBER 50 GR.	C040900A00202	500 GR.

## FITTINGS

### NP Series - Nipples

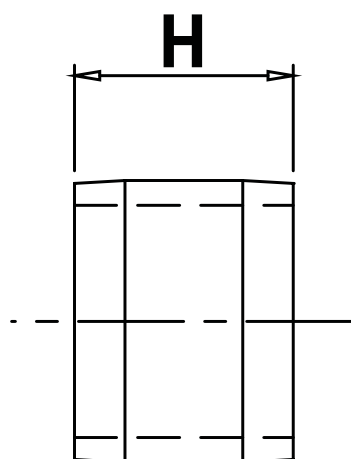


NP series nipples are used to connect equipment or other unions with female hub.

## TECHNICAL FEATURES

<b>Material</b>	Galvanised steel (other materials upon request)
<b>IP rating</b>	IP66/IP67
<b>Ambient temperature range</b>	ATEX Galvanised steel: -40°C to +150°C Stainless Steel: -55°C to +150°C (upon request)
<b>Approvals</b>	IEC Ex Galvanised steel: -40°C to +150°C (upon request) Stainless Steel: -50°C to +150°C (upon request)
<b>Marking</b>	CESI 01 ATEX 104U IECEX CES 15.0005U EAC
<b>Thread</b>	II 2GD Ex d/e IIC Gb Ex tb IIIC Db IP66/67
	NPT, UNI-6125 (other thread upon request)

## Dimensions NP



## Nipples - NP

TYPE	CODE	SIZE	THREAD	LENGHT H	WEIGHT [Kg]
NP-1	C040214130201	1/2"	UNI-6125	48	0,050
NP-2	C040214230201	3/4"	UNI-6125	60	0,060
NP-3	C040214330201	1"	UNI-6125	55	0,100
NP-4	C040214430201	1" 1/4	UNI-6125	55	0,140
NP-5	C040214530201	1" 1/2	UNI-6125	55	0,150
NP-6	C040214630201	2"	UNI-6125	55	0,200
NP-7	C040214730201	2" 1/2	UNI-6125	68	0,450
NP-8	UPON REQUEST	3"	UNI-6125	68	0,700
NP-1N	C040214120201	1/2"	NPT	48	0,050
NP-2N	C040214220201	3/4"	NPT	60	0,060
NP-3N	C040214320201	1"	NPT	55	0,100
NP-4N	C040214420201	1" 1/4	NPT	55	0,140
NP-5N	C040214520201	1" 1/2	NPT	55	0,150
NP-6N	C040215620201	2"	NPT	55	0,200
NP-7N	C040214720201	2" 1/2	NPT	68	0,450
NP-8N	C040214820201	3"	NPT	68	0,700

# FITTINGS

## EM Series - Unions

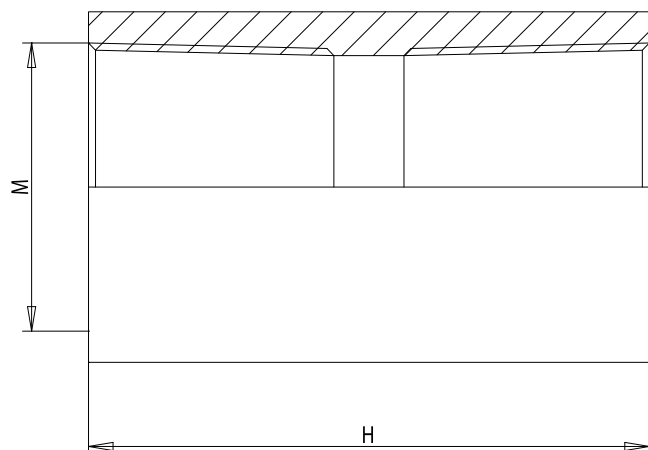


EM series couplings are used for connection of pipes with threaded male ends.

## TECHNICAL FEATURES

<b>Material</b>	Galvanised steel (other materials upon request)
<b>IP rating</b>	IP66/IP67
<b>Ambient temperature range</b>	ATEX Galvanised steel: -40°C to +150°C Stainless Steel: -55°C to +150°C (upon request) IEC Ex Galvanised steel: -40°C to +150°C (upon request) Stainless Steel: -50°C to +150°C (upon request)
<b>Approvals</b>	CESI 01 ATEX 104U IECEX CES 15.0005U EAC
<b>Marking</b>	II 2GD Ex d/e IIC Gb Ex tb IIIC Db IP66/67
<b>Thread</b>	NPT, UNI-6125 (other thread upon request)

## Dimensions EM



## Coupling - EM

TYPE	CODE	SIZE	THREAD	LENGHT H	WEIGHT [Kg]
EM-1	C040434130201	1/2"	UNI-6125	39	0,090
EM-2	C040434230201	3/4"	UNI-6125	39	0,080
EM-3	C040434330201	1"	UNI-6125	51	0,150
EM-4	UPON REQUEST	1" 1/4	UNI-6125	51	0,270
EM-5	C040434530201	1" 1/2	UNI-6125	51	0,270
EM-6	C040434630201	2"	UNI-6125	51	0,450
EM-7	C040434730201	2" 1/2	UNI-6125	65	0,650
EM-8	UPON REQUEST	3"	UNI-6125	65	0,800
EM-1N	C040434120201	1/2"	NPT	39	0,090
EM-2N	C040434220201	3/4"	NPT	39	0,080
EM-3N	C040434320201	1"	NPT	51	0,150
EM-4N	C040434420201	1" 1/4	NPT	51	0,270
EM-5N	C040434520201	1" 1/2	NPT	51	0,270
EM-6N	C040434620201	2"	NPT	51	0,450
EM-7N	C040434720201	2" 1/2	NPT	65	0,650
EM-8N	UPON REQUEST	3"	NPT	65	0,800

# FITTINGS

## ELF Series - Elbows

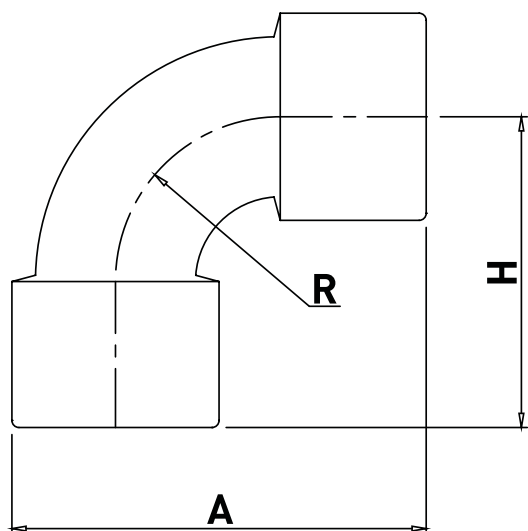


90° non-inspectable elbows are used in conduit system of electrical equipment.

## TECHNICAL FEATURES

<b>Material</b>	Aluminium with low content of copper
<b>IP rating</b>	IP66/IP67
<b>Ambient temperature range</b>	ATEX -55°C to +150°C IEC Ex -50°C to +150°C (upon request)
<b>Approvals</b>	IECEX CES 15.0005U CESI 01 ATEX 104U EAC
<b>Marking</b>	II 2GD Ex d/e IIC Gb Ex tb IIIC Db IP66/67
<b>Thread</b>	NPT, UNI-6125 (other thread upon request)

## Dimensions ELF



## Female-Female elbow - ELF

TYPE	CODE	SIZE	THREAD	DIMENSIONS [mm]			WEIGHT [Kg]
				A	H	R	
ELF-1	C040331130201	1/2"	UNI-6125	60	45	30	0.12
ELF-2	C040331230201	3/4"	UNI-6125	75	55	30	0.10
ELF-3	C040331330201	1"	UNI-6125	85	65	35	0.20
ELF-4	C040331430201	1" 1/4	UNI-6125	100	75	50	0.39
ELF-5	C040331530201	1" 1/2	UNI-6125	110	87	50	0.37
ELF-6	C040331630201	2"	UNI-6125	135	98	60	0.62
ELF-7	C040331730201	2" 1/2	UNI-6125	175	135	65	0.88
ELF-8	UPON REQUEST	3"	UNI-6125	210	160	85	1.48
ELF-1	C040331120201	1/2"	NPT	60	45	30	0.12
ELF-2	C040331220201	3/4"	NPT	75	55	30	0.10
ELF-3	C040331320201	1"	NPT	85	65	35	0.20
ELF-4	C040331420201	1" 1/4	NPT	100	75	50	0.39
ELF-5	C040331520201	1" 1/2	NPT	110	87	50	0.37
ELF-6	C040331620201	2"	NPT	135	98	60	0.62
ELF-7	C040331720201	2" 1/2	NPT	175	135	65	0.88
ELF-8	UPON REQUEST	3"	NPT	210	160	85	1.48

## FITTINGS

### LBH Series - Open elbows

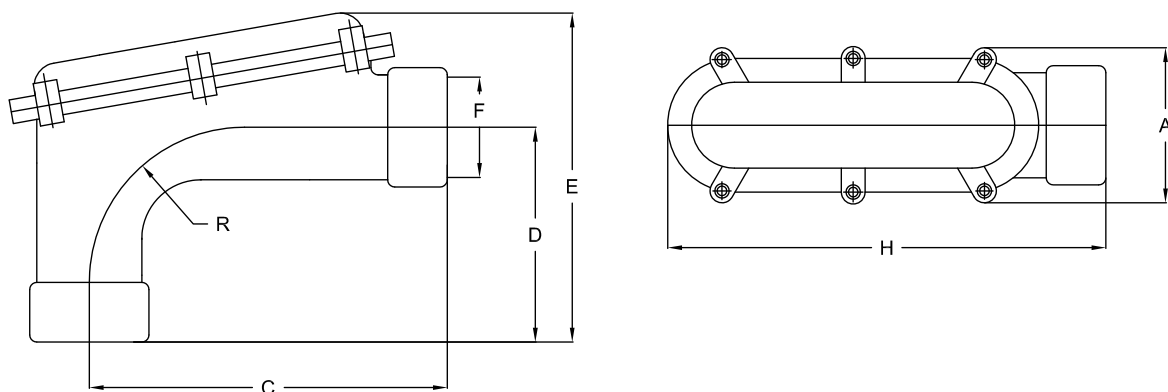


LBH and LBHS series L shaped open elbows are used for the cables run in conduit system of electrical installations.  
The flanged opening enables easy inspection and insertion of electrical cables.

## TECHNICAL FEATURES

<b>Material</b>	Aluminium with low content of copper
<b>IP rating</b>	IP66/IP67
<b>Ambient temperature range</b>	ATEX [-20°C,+60°C]
<b>Approvals</b>	CESI 03 ATEX 141U EAC
<b>Marking</b>	II 2 G Ex d IIB
<b>Thread</b>	NPT, UNI-6125 (other threads upon request)

## Dimensions LBH



## Open elbows LBH

TYPE	CODE	SIZE	THREAD	DIMENSIONS [mm]						WEIGHT [Kg]
				A	H	C	D	E	R	
LBH-1	B170814130020	1/2"	UNI-6125	70	165	132	45	95	21	0.434
LBH-2	B170814230020	3/4"	UNI-6125	70	165	132	45	95	21	0.404
LBH-3	B170814330020	1"	UNI-6125	70	168	132	60	112	30	0.455
LBH-4	B170814430020	1" 1/4	UNI-6125	100	230	175	83	155	50	1.277
LBH-5	B170814530020	1" 1/2	UNI-6125	110	265	220	83	132	70	1.142
LBH-6	B170814630020	2"	UNI-6125	110	265	220	80	132	70	1.024
LBH-7	B170814730020	2" 1/2	UNI-6125	136	363	267	140	250	96	3.569
LBH-8	B170814830020	3"	UNI-6125	136	363	267	140	250	96	3.171
LBH-1	B170814120020	1/2"	NPT	70	165	132	45	95	21	0.434
LBH-2	B170814220020	3/4"	NPT	70	165	132	45	95	21	0.404
LBH-3	B170814320020	1"	NPT	70	168	132	60	112	30	0.455
LBH-4	B170814420020	1" 1/4	NPT	100	230	175	83	155	50	1.277
LBH-5	B170814520020	1" 1/2	NPT	110	265	220	83	132	70	1.142
LBH-6	B170814620020	2"	NPT	110	265	220	80	132	70	1.024
LBH-7	B170814720020	2" 1/2	NPT	136	363	267	140	250	96	3.569
LBH-8	B170814820020	3"	NPT	136	363	267	140	250	96	3.171

## FITTINGS

### DB Series - Aluminium bushings



DB...A series bushings are made of aluminium. They are screwed to the pipe and they work as a cable guard. They prevent the cable from rubbing on any pipe burr/edge which could damage its sheath.

## TECHNICAL FEATURES

### Material

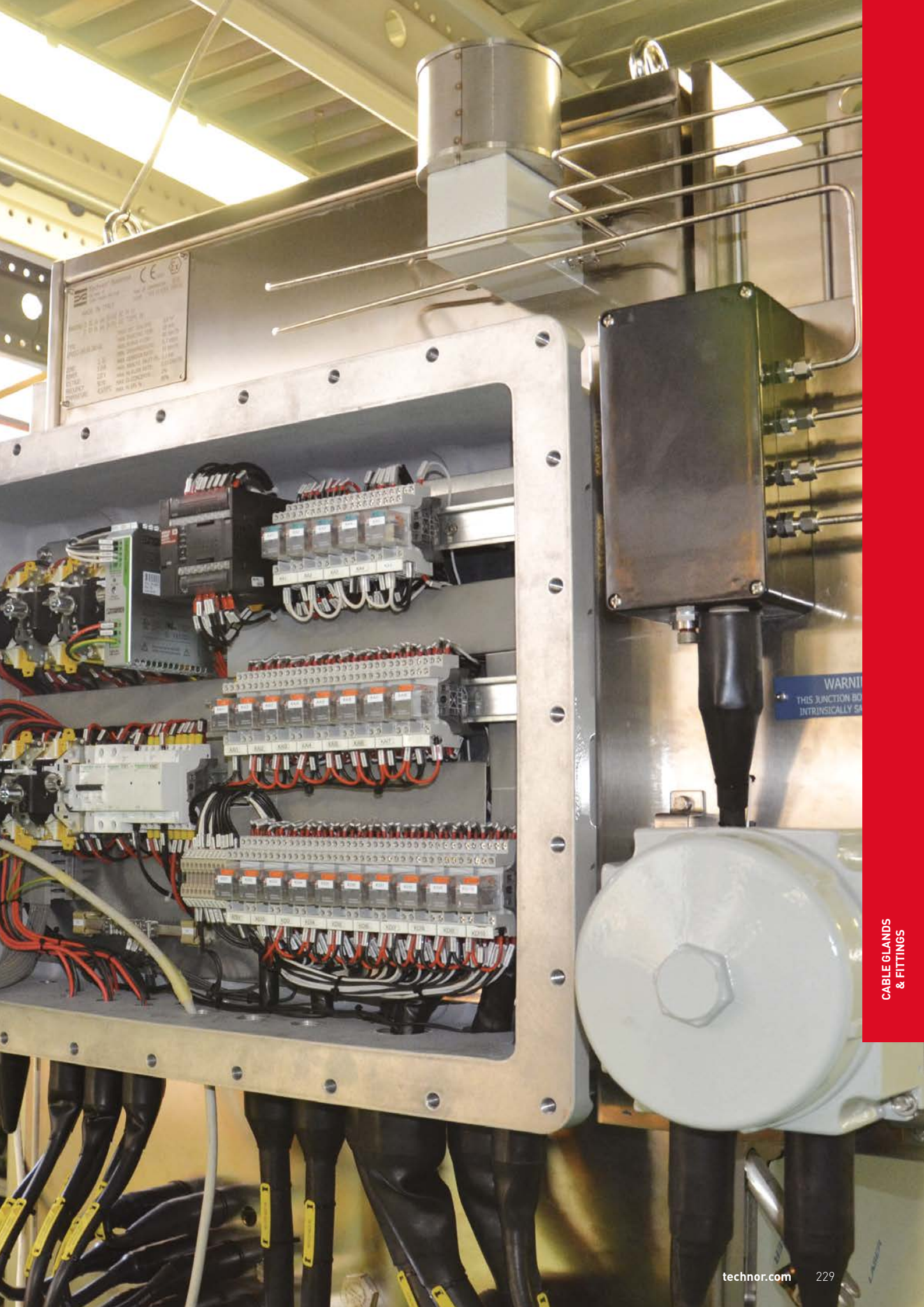
Aluminium with low content of copper

### Thread

NPT, UNI-6125 (other thread upon request)

### Aluminium bushings - DB

TYPE	CODE	SIZE	THREAD	WEIGHT [Kg]
DB-1	C040501150201	1/2"	ISO-228	0.012
DB-2	C040501250201	3/4"	ISO-228	0.014
DB-3	C040501350201	1"	ISO-228	0.020
DB-4	C040501450201	1" 1/4	ISO-228	0.025
DB-5	C040501550201	1" 1/2	ISO-228	0.032
DB-6	C040501650201	2"	ISO-228	0.046
DB-7	C040501750201	2" 1/2	ISO-228	0.062
DB-8	C040501850201	3"	ISO-228	0.071
DB-1	C040501120201	1/2"	NPT	0.012
DB-2	C040501220201	3/4"	NPT	0.014
DB-3	C040501320201	1"	NPT	0.020
DB-4	C040501420201	1" 1/4	NPT	0.025
DB-5	C040501520201	1" 1/2	NPT	0.032
DB-6	C040501620201	2"	NPT	0.046
DB-7	C040501720201	2" 1/2	NPT	0.062
DB-8	C040501850201	3"	NPT	0.071



## FITTINGS

### PLG Series - Recessed exagonal plugs

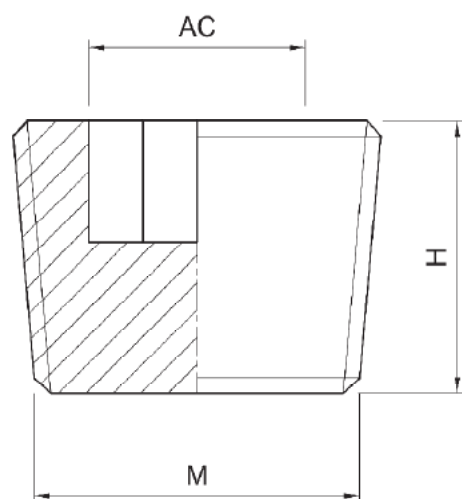


PLG series plugs are used to close the unused entries. They have an hexagonal head so that they can be opened with proper tools only.

## TECHNICAL FEATURES

<b>Material</b>	Galvanized steel , Aluminium with low content of copper
<b>IP rating</b>	IP66/IP67
<b>Ambient temperature range</b>	-20°C +80°C - galvanized steel, with Silicone gasket -40°C +150°C - brass nk or aluminum, with Silicone gasket -50°C +150°C - stainless steel, with Silicone gasket
<b>Approvals</b>	CESI 02 ATEX 049 X IECEX CES 10.0001X EAC
<b>Marking</b>	II 2GD Ex d IIC Gb/Ex e IIC Gb Ex tb IIIC Db IP66/67
<b>Thread</b>	NPT, UNI-6125 (other threads upon request)

## Dimensions PLG



## Recessed hexagonal plugs - PLG

TYPE	CODE	SIZE	THREAD	MATERIAL	DIMENSIONS [mm]		WEIGHT [Kg]
					AC	H	
PLG-1	C020213302001	1/2"	UNI-6125	GALV. STEEL	13	18	0.034
PLG-2	C020223302001	3/4"	UNI-6125	GALV. STEEL	17	18	0.054
PLG-3	C020233302001	1"	UNI-6125	GALV. STEEL	19	24	0.124
PLG-4	C020243102001	1" 1/4	UNI-6125	ALUMINIUM	24	24	0.061
PLG-5	C020253102001	1" 1/2	UNI-6125	ALUMINIUM	35	24	0.063
PLG-6	C020263102001	2"	UNI-6125	ALUMINIUM	36	24	0.109
PLG-7	C020273102001	2" 1/2	UNI-6125	ALUMINIUM	50	30	0.169
PLG-8	C020283102001	3"	UNI-6125	ALUMINIUM	50	30	0.242
PLG-1	C020212302001	1/2"	NPT	GALV. STEEL	13	18	0.034
PLG-2	C020222302001	3/4"	NPT	GALV. STEEL	17	18	0.054
PLG-3	C020232302001	1"	NPT	GALV. STEEL	19	24	0.124
PLG-4	C020242102001	1" 1/4	NPT	ALUMINIUM	24	24	0.061
PLG-5	C020252102001	1" 1/2	NPT	ALUMINIUM	35	24	0.063
PLG-6	C020262102001	2"	NPT	ALUMINIUM	36	24	0.109
PLG-7	C020272102001	2" 1/2	NPT	ALUMINIUM	50	30	0.169
PLG-8	C020282102001	3"	NPT	ALUMINIUM	50	30	0.242

# FITTINGS

## PLG Series - Resin exagonal plugs

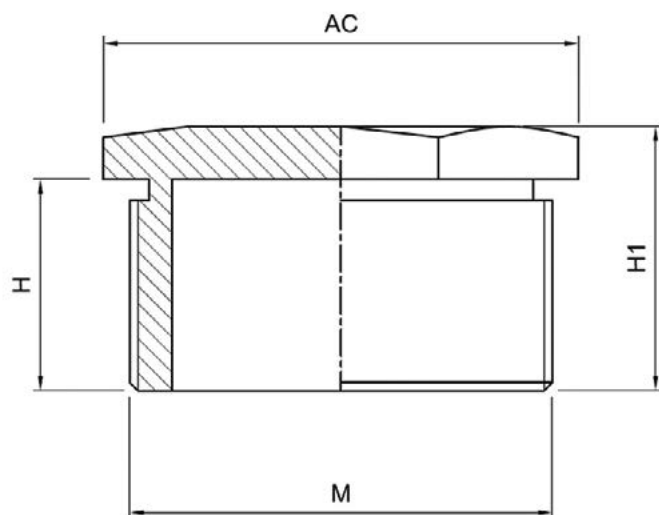


PLG series polyamide plugs are used to close the unused entries in case of Ex e/Ex i certified enclosures (for intrinsically safe circuits, plugs can be supplied blue coloured).

## TECHNICAL FEATURES

Material	Black polyamide
IP rating	IP66/IP68
Ambient temperature range	-20°C to +80°C
Approvals	CESI 03 ATEX 305X
Marking	II 2 GD Ex e II - Ex i II Ex tD A21 IP66/68
Thread	Metric pitch 1,5, PG
Optional accessories	Locknut, Gasket (for selection please refer to page 178)

## Dimensions PLG



## Hexagonal head plugs - PLG

TYPE	CODE	THREAD	DIMENSIONS [mm]		
			H	H1	AC
PLG-01IXE	C020201502001	M16X1,5	12	16	19
PLG-1IXE	C020211502001	M20X1,5	15	20	23
PLG-2IXE	C020221502001	M25X1,5	15	20	28
PLG-3IXE	C020231502001	M32X1,5	15	23	36
PLG-4IXE	C020241502001	M40X1,5	18	27	45
PLG-5IXE	C020251502001	M50X1,5	18	27	55
PLG-6IXE	C020261502001	M63X1,5	18	27	69
PLG-2PXE	B170211040030	PG9			
PLG-3PXE	B170211140030	PG11			
PLG-4PXE	B170210040030	PG13,5			
PLG-5PXE	B170210140030	PG16			
PLG-6PXE	B170210240030	PG21			
PLG-7PXE	B170210340030	PG29			
PLG-8PXE	B170210540030	PG36			

## FITTINGS

### T Series - Exagonal plugs

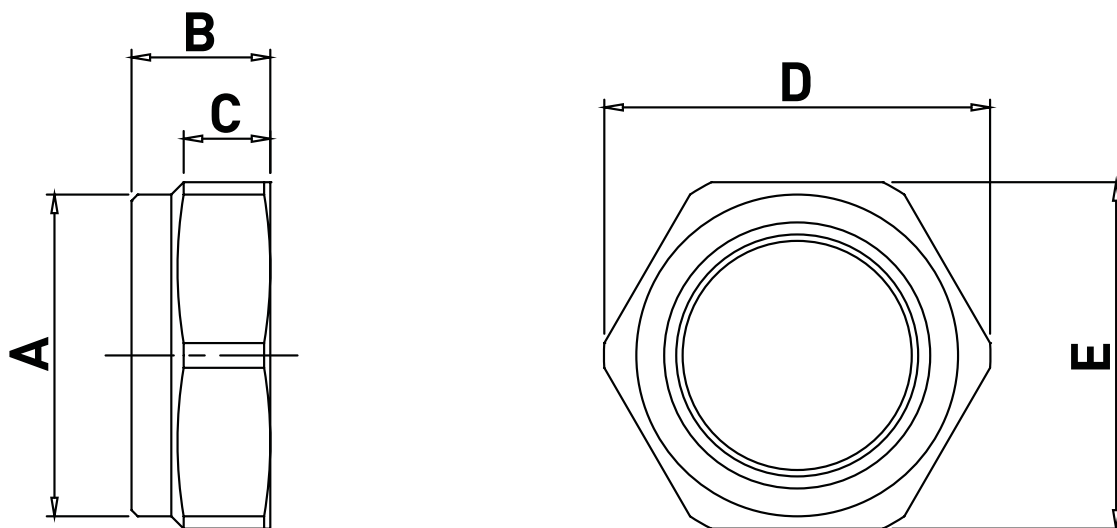


T.. series hexagonal plugs are used to close the unused entries, they have both Ex d and Ex e mode of protection.

## TECHNICAL FEATURES

<b>Material</b>	Nickel chrome plated brass AISI 316 L Stainless steel (other materials upon request)
<b>IP rating</b>	IP66/IP68
<b>Ambient temperature range</b>	-40°C +100°C with EPDM or Nylon gaskets -65°C +220°C with Silicone gaskets -65°C +400°C without gaskets
<b>Approvals</b>	Certified 12ATEX 0089X IEC Ex IIE 10.0014X EAC
<b>Marking</b>	II 2GD Ex d/e IIC Gb Ex tb IIIC Db IP66/68  I M2 Ex d/e I Mb
<b>Thread</b>	Metric pitch 1,5, NPT (other threads upon request)
<b>Optional accessories</b>	Locknut, Gasket

## Dimensions T.. Series



## T.. Series Hexagonal head plugs

TYPE	CODE		SIZE	THREAD	DIMENSIONS [mm]				
	BRASS	AISI 316 L			A	B	C	D	E
T20	C020111203001	C020111403001	M20 X 1,5	METRIC	23	27	16	26	24
T25	C020121203001	C020121403001	M25 X 1,5	METRIC	29	27	16	33	30
T32	C020131203001	C020131403001	M32 X 1,5	METRIC	35	27	16	40	36
T40	C020141203001	C020141403001	M40 X 1,5	METRIC	45	30	18	51	46
T50	C020151203001	C020151403001	M50 X 1,5	METRIC	55	30	18	62	56
T63	C020161203001	C020161403001	M63 X 1,5	METRIC	69	31	18	77	70
T75	C020171203001	C020171403001	M75 X 1,5	METRIC	81	32	18	90	82
T80	C020181203001	C020181403001	M80 X 1,5	METRIC	86	32	18	96	87
T1N	C020112203001	C020112403001	1/2"	NPT	26	30	19	30	27
T2N	C020122203001	C020122403001	3/4"	NPT	31	30	19	35	32
T3N	C020132203002	C020132403001	1"	NPT	37	36	25	42	38
T4N	C020142201001	C020142403001	1" 1/4	NPT	47	37	25	53	48
T5N	C020152203001	C020152403001	1" 1/2	NPT	55	37	25	62	56
T6N	C020162203001	UPON REQUEST	2"	NPT	66	38	25	74	67
T7N	UPON REQUEST	UPON REQUEST	2" 1/2	NPT	81	46	32	90	82
T8N	UPON REQUEST	UPON REQUEST	3"	NPT	95	46	36	106	96

# FITTINGS

## RE/REB Series - Reductions and adaptors

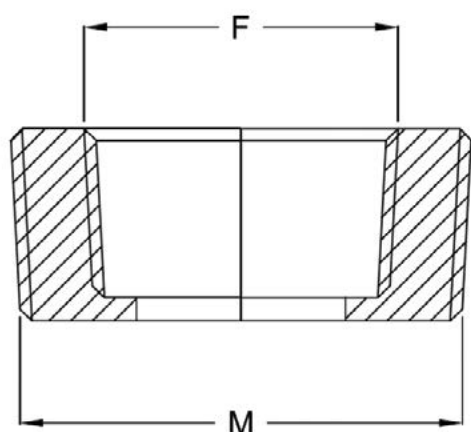


Reductions and adaptors are used to connect pipes of an electrical equipment and enclosures or different devices of an explosion-proof equipment with different entries sizes.

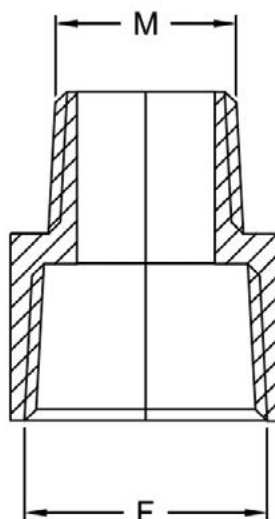
## TECHNICAL FEATURES

<b>Material</b>	Galvanized steel, aluminium with low content of copper
<b>IP rating</b>	IP66/IP67
<b>Ambient temperature range</b>	-20°C +80°C - galvanized steel, with Silicone gasket -40°C +150°C - brass nk or aluminum, with Silicone gasket -50°C +150°C - stainless steel, with Silicone gasket
<b>Approvals</b>	CESI 02 ATEX 049 X IECEX CES 10.0001X EAC
<b>Marking</b>	II 2GD Ex d IIC Gb/Ex e IIC Gb Ex tb IIIC Db IP66/67
<b>Thread</b>	NPT, UNI-6125 (other threads upon request)

## Dimensions RE



## Dimensions REB



## Reductions RE

TYPE	CODE		MATERIAL	MALE M	FEMALE F	WEIGHT [Kg]
	UNI-6125	NPT				
RE-21	B171213213020	B171213212020	GALV. STEEL	3/4"	1/2"	0.038
RE-31	C054133130101	B171213312020	GALV. STEEL	1"	1/2"	0.089
RE-32	B171213323020	B171213322020	GALV. STEEL	1"	3/4"	0.058
RE-41	B171214413020	B171214412020	ALUMINIUM	1" 1/4	1/2"	0.064
RE-42	B171214423020	B171214422020	ALUMINIUM	1" 1/4	3/4"	0.053
RE-43	B171214433020	B171214432020	ALUMINIUM	1" 1/4	1"	0.034
RE-51	B171214513020	B171214512020	ALUMINIUM	1" 1/2	1/2"	0.092
RE-52	B171214523020	B171214522020	ALUMINIUM	1" 1/2	3/4"	0.079
RE-53	B171214533020	B171214532020	ALUMINIUM	1" 1/2	1"	0.061
RE-54	B171214543020	B171214542020	ALUMINIUM	1" 1/2	1" 1/4	0.029
RE-61	B171214613020	B171214612020	ALUMINIUM	2"	1/2"	0.153
RE-62	B171214623020	B171214622020	ALUMINIUM	2"	3/4"	0.148
RE-63	B171214633020	B171214632020	ALUMINIUM	2"	1"	0.124
RE-64	B171214643020	B171214642020	ALUMINIUM	2"	1" 1/4	0.095
RE-65	B171214653020	B171214652020	ALUMINIUM	2"	1" 1/2	0.068
RE-71	B171214713020	B171214712020	ALUMINIUM	2" 1/2	1/2"	0.244
RE-72	B171214723020	B171214722020	ALUMINIUM	2" 1/2	3/4"	0.243
RE-73	B171214733020	B171214732020	ALUMINIUM	2" 1/2	1"	0.272
RE-74	B171214743020	B171214742020	ALUMINIUM	2" 1/2	1" 1/4	0.238
RE-75	B171214753020	B171214752020	ALUMINIUM	2" 1/2	1" 1/2	0.198
RE-76	B171214763020	B171214762020	ALUMINIUM	2" 1/2	2"	0.136
RE-81	B171214813020	B171214812020	ALUMINIUM	3"	1/2"	0.416
RE-82	B171214823020	B171214822020	ALUMINIUM	3"	3/4"	0.355
RE-83	B171214833020	B171214832020	ALUMINIUM	3"	1"	0.323
RE-84	B171214843020	B171214842020	ALUMINIUM	3"	1" 1/4	0.302
RE-85	B171214853020	B171214852020	ALUMINIUM	3"	1" 1/2	0.318
RE-86	B171214863020	B171214862020	ALUMINIUM	3"	2"	0.249
RE-87	B171213873020	B171213872020	GALV. STEEL	3"	2" 1/2	0.578

## Reductions RE

TYPE	CODE	THREAD	MATERIAL	MALE M	FEMALE F	WEIGHT [Kg]
RE-32	B1709.000038	NPT	GALV. STEEL	1"	3/4"	0.058
RE-41	B1709.000039	NPT	ALUMINIUM	1" 1/4	1/2"	0.064
RE-42	B1709.000040	NPT	ALUMINIUM	1" 1/4	3/4"	0.053
RE-43	B1709.000041	NPT	ALUMINIUM	1" 1/4	1"	0.034
RE-51	B1709.000042	NPT	ALUMINIUM	1" 1/2	1/2"	0.092
RE-52	B1709.000043	NPT	ALUMINIUM	1" 1/2	3/4"	0.079
RE-53	B1709.000044	NPT	ALUMINIUM	1" 1/2	1"	0.061
RE-54	B1709.000045	NPT	ALUMINIUM	1" 1/2	1" 1/4	0.029
RE-61	B1709.000046	NPT	ALUMINIUM	2"	1/2"	0.153
RE-62	B1709.000047	NPT	ALUMINIUM	2"	3/4"	0.148
RE-63	B1709.000048	NPT	ALUMINIUM	2"	1"	0.124
RE-64	B1709.000049	NPT	ALUMINIUM	2"	1" 1/4	0.095
RE-65	B1709.000050	NPT	ALUMINIUM	2"	1" 1/2	0.068
RE-73	B1709.000051	NPT	ALUMINIUM	2" 1/2	1"	0.272
RE-75	B1709.000052	NPT	ALUMINIUM	2" 1/2	1" 1/2	0.198
RE-76	B1709.000053	NPT	ALUMINIUM	2" 1/2	2"	0.136
RE-83	B1709.000054	NPT	ALUMINIUM	3"	1"	0.323
RE-85	B1709.000055	NPT	ALUMINIUM	3"	1" 1/2	0.318
RE-86	B1709.000056	NPT	ALUMINIUM	3"	2"	0.249
RE-87	B1709.000057	NPT	GALV. STEEL	3"	2" 1/2	0.578

## Adaptors REB

TYPE	CODE		MATERIAL	MALE M	FEMALE F	WEIGHT [Kg]
	UNI-6125	NPT				
REB-21	B171223123020	B171223122020	GALV. STEEL	1/2"	3/4"	0.069
REB-31	B171223133020	B171223132020	GALV. STEEL	1/2"	1"	0.108
REB-32	B171223233020	B171223232020	GALV. STEEL	3/4"	1"	0.109
REB-41	B171223143020	B171223142020	ALUMINIUM	1/2"	1" 1/4	0.187
REB-42	B171223243020	B171223242020	ALUMINIUM	3/4"	1" 1/4	0.171
REB-43	B171223343020	B171223342020	ALUMINIUM	1"	1" 1/4	0.209
REB-51	B171223153020	B171223152020	ALUMINIUM	1/2"	1" 1/2	0.352
REB-52	B171223253020	B171223252020	ALUMINIUM	3/4"	1" 1/2	0.323
REB-53	B171223353020	B171223352020	ALUMINIUM	1"	1" 1/2	0.337
REB-54	B171223453020	B171223452020	ALUMINIUM	1" 1/4	1" 1/2	0.359
REB-61	B171223163020	B171223162020	ALUMINIUM	1/2"	2"	0.459
REB-62	B171223263020	B171223262020	ALUMINIUM	3/4"	2"	0.417
REB-63	B171223363020	B171223362020	ALUMINIUM	1"	2"	0.489
REB-64	B171223463020	B171223462020	ALUMINIUM	1" 1/4	2"	0.436
REB-65	B171223563020	B171223562020	ALUMINIUM	1" 1/2	2"	0.463
REB-71	B171223173020	B171223172020	ALUMINIUM	1/2"	2" 1/2	0.597
REB-72	B171223273020	B171223272020	ALUMINIUM	3/4"	2" 1/2	0.611
REB-73	B171223373020	B171223372020	ALUMINIUM	1"	2" 1/2	0.601
REB-74	B171223473020	B171223472020	ALUMINIUM	1" 1/4	2" 1/2	0.663
REB-75	B171223573020	B171223572020	ALUMINIUM	1" 1/2	2" 1/2	0.667
REB-76	B171223673020	B171223672020	ALUMINIUM	2"	2" 1/2	0.531
REB-81	B171223183020	B171223182020	ALUMINIUM	1/2"	3"	0.674
REB-82	B171223283020	B171223282020	ALUMINIUM	3/4"	3"	0.687
REB-83	B171223383020	B171223382020	ALUMINIUM	1"	3"	0.900
REB-84	B171223483020	B171223482020	ALUMINIUM	1" 1/4	3"	0.864
REB-85	B171223583020	B171223582020	ALUMINIUM	1" 1/2	3"	0.884
REB-86	B171223683020	B171223682020	ALUMINIUM	2"	3"	0.767
REB-87	B171223783020	B171223782020	GALV. STEEL	2" 1/2	3"	1.055

## FITTINGS

### A../F../M../R.. Series - Reductions and adaptors



Reductions and adaptors are used to connect pipes of an electrical equipment and enclosures or different devices of an explosion-proof equipment with different entries sizes.

## TECHNICAL FEATURES

### Material

Nickel chrome plated brass  
AISI 316 L Stainless steel

### IP rating

IP66/IP68

### Ambient temperature range

-40°C +100°C with EPDM or Nylon gaskets  
-65°C +220°C with Silicone gaskets  
-65°C +400°C without gaskets

### Approvals

Certified 12ATEX 0089X  
IEC Ex INE 10.0014X  
EAC

### Marking

II 2GD  
Ex d/e IIC Gb  
Ex tb IIIC Db IP66/68

I M2  
Ex d/e I Mb

### Thread

ISO METRIC pitch 1,5, NPT, UNI-6125 (other thread upon request)

## Assembly diagram

B17	1	#	#	#	#	#	#	0	#	0	
											-
									CERTIFICATE		2 - ATEX GROUP II 3 - IECEX GROUP II
											-
											0 - SIZE 0 (M16) 1 - SIZE 1 (M20, 1/2") 2 - SIZE 2 (M25, 3/4") 3 - SIZE 3 (M32, 1") 4 - SIZE 4 (M40, 1" 1/4) 5 - SIZE 5 (M50, 1" 1/2) 6 - SIZE 6 (M63, 2") 7 - SIZE 7 (M75, 2" 1/2) 8 - SIZE 8 (M80, 3")
									2ND THREAD		1 - UNI 6125 2 - METRIC 3 - NPT 5 - PG
											0 - SIZE 0 (M16) 1 - SIZE 1 (M20, 1/2") 2 - SIZE 2 (M25, 3/4") 3 - SIZE 3 (M32, 1") 4 - SIZE 4 (M40, 1" 1/4) 5 - SIZE 5 (M50, 1" 1/2) 6 - SIZE 6 (M63, 2") 7 - SIZE 7 (M75, 2" 1/2) 8 - SIZE 8 (M80, 3")
											1 - UNI 6125 2 - METRIC 3 - NPT 5 - PG
									1ST THREAD		2 - MALE/MALE 3 - MALE/FEMALE 4 - FEMALE/FEMALE 5 - FEMALE/MALE
											0 - BNK BRASS NICKEL CHROME PLATED 1 - STAINLESS STEEL AISI316
											-